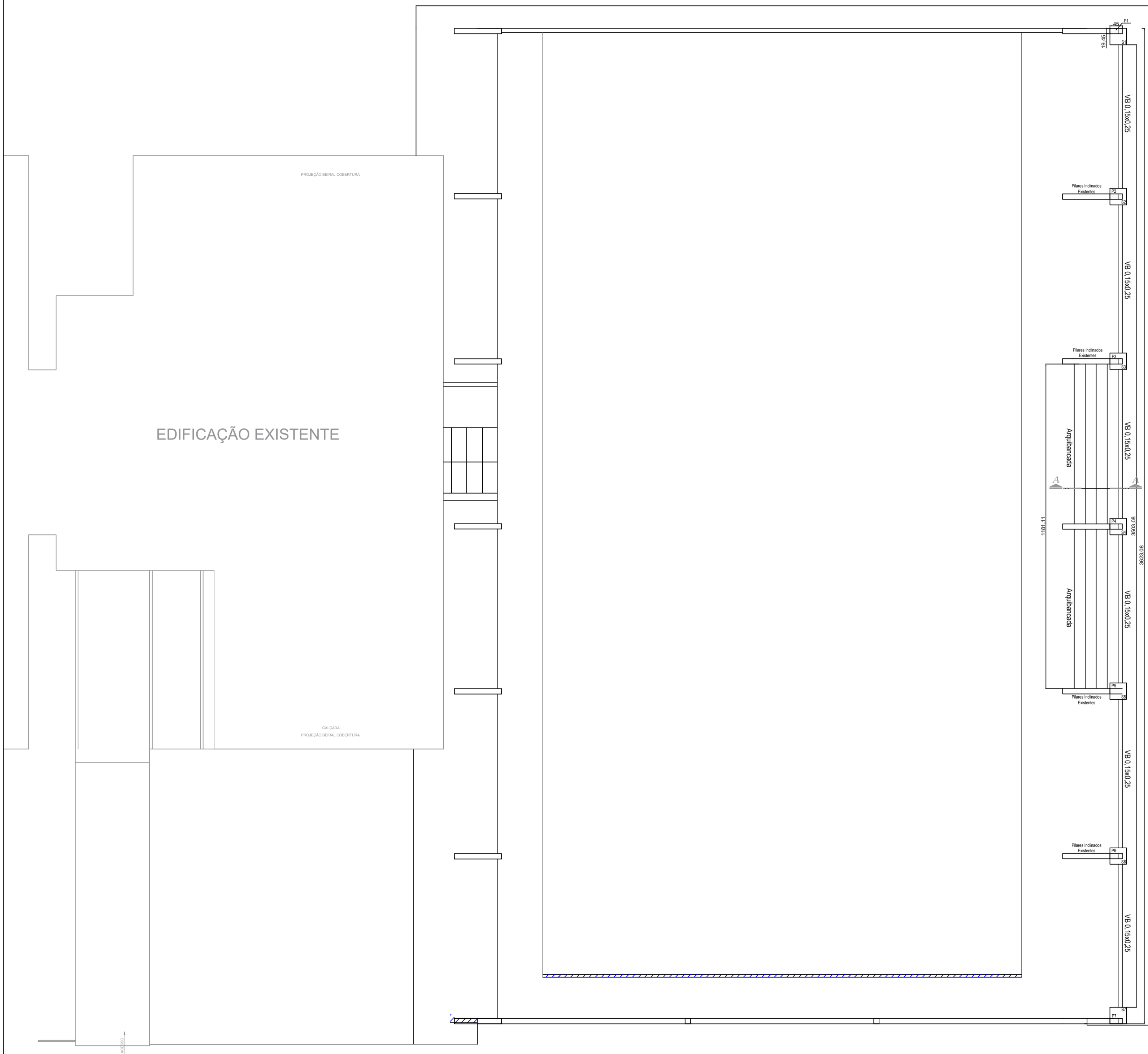


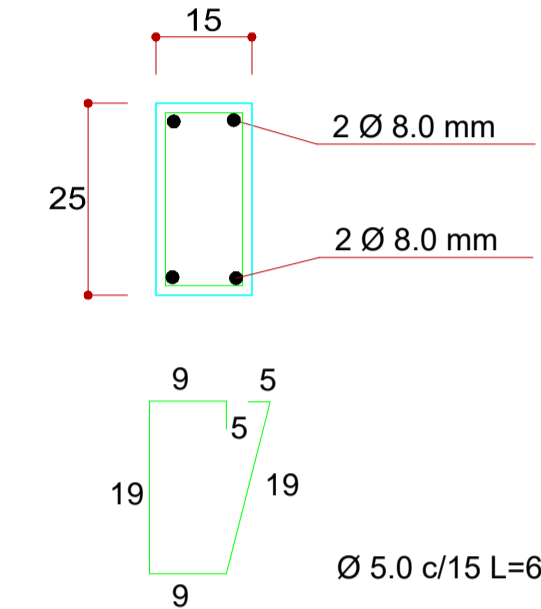
Planta de Reforma- ESTRUTURAL  
Sem Escala



DETALHAMENTO GENÉRICO VIGAS BALDRAME

SEÇÃO 15x25

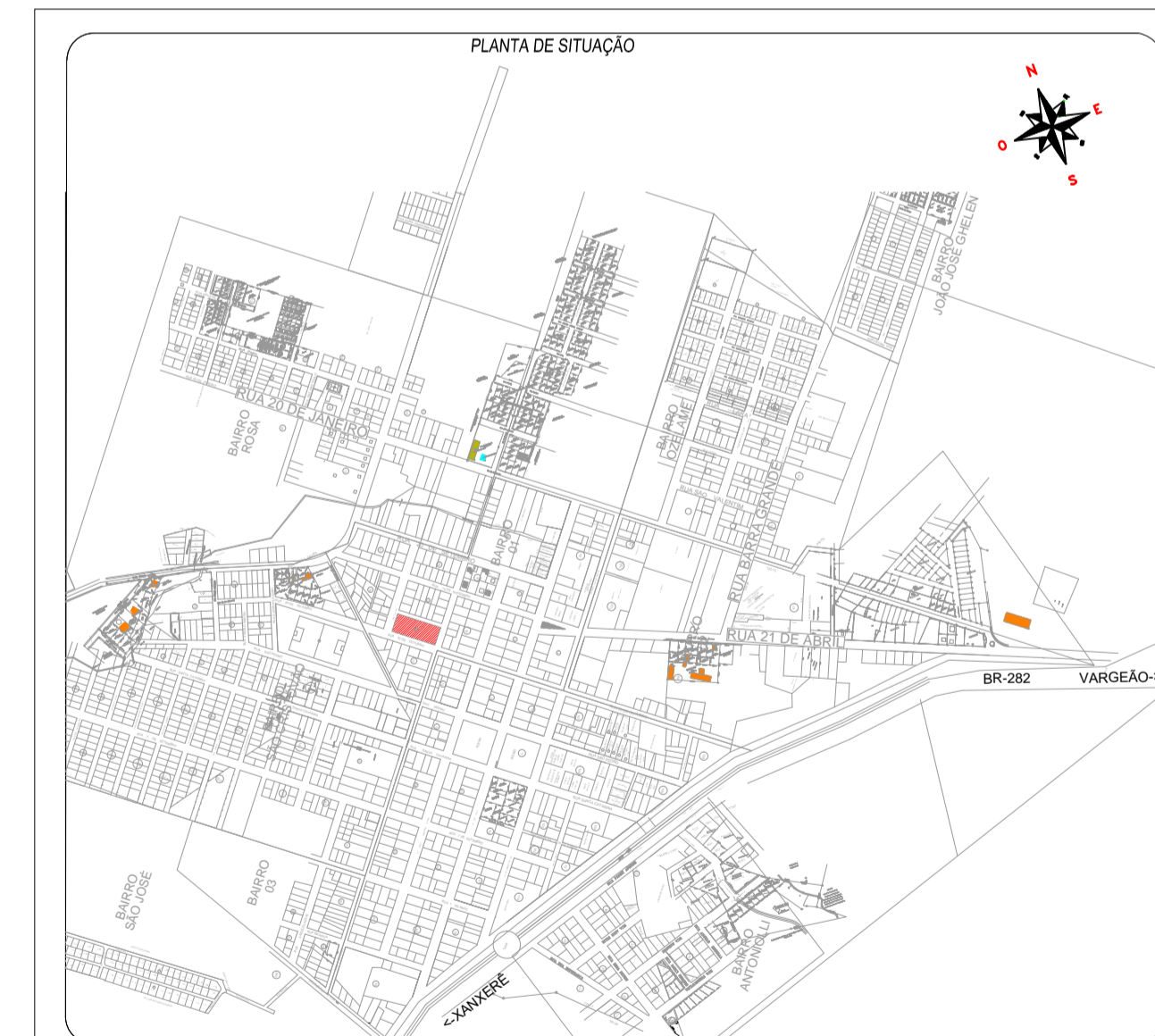
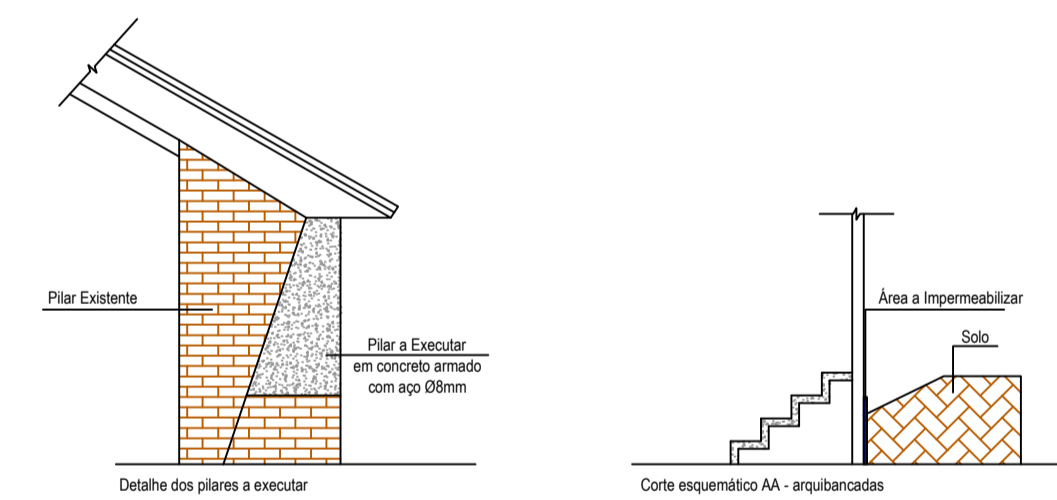
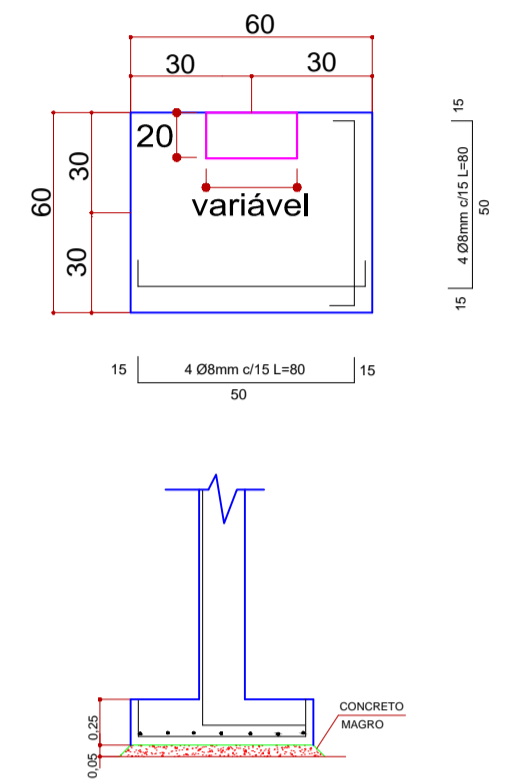
\* Cobrimento de 3cm  
\* Fck 25 MPa



ARMAÇÃO SAPATAS

Sapatas (60x60)

\* Cobrimento de 5cm



REFORMA E MELHORIAS DA QUADRA ESPORTIVA DA ESCOLA SANTA TEREZINHA

Folha: 02/03

ENDEREÇO: RUA PRESIDENTE DUTRA, CENTRO  
MUNICÍPIO(S): FAXINAL DOS GUEDES ESTADO UF: SC  
DATA: 09/2021

Prop.: PREFEITURA MUNICIPAL DE FAXINAL DOS GUEDES

Resp. Téc.: MICHELE SANTIN  
ARQUITETA E URBANISTA  
CAU A73047-5



FAXINAL DOS GUEDES - SC  
GOVERNO MUNICIPAL  
Av. Rio Grande do Sul, 458 - Centro  
CEP: 89664-000 - Fone: (49) 3436-4300  
www.faxinal.sc.gov.br