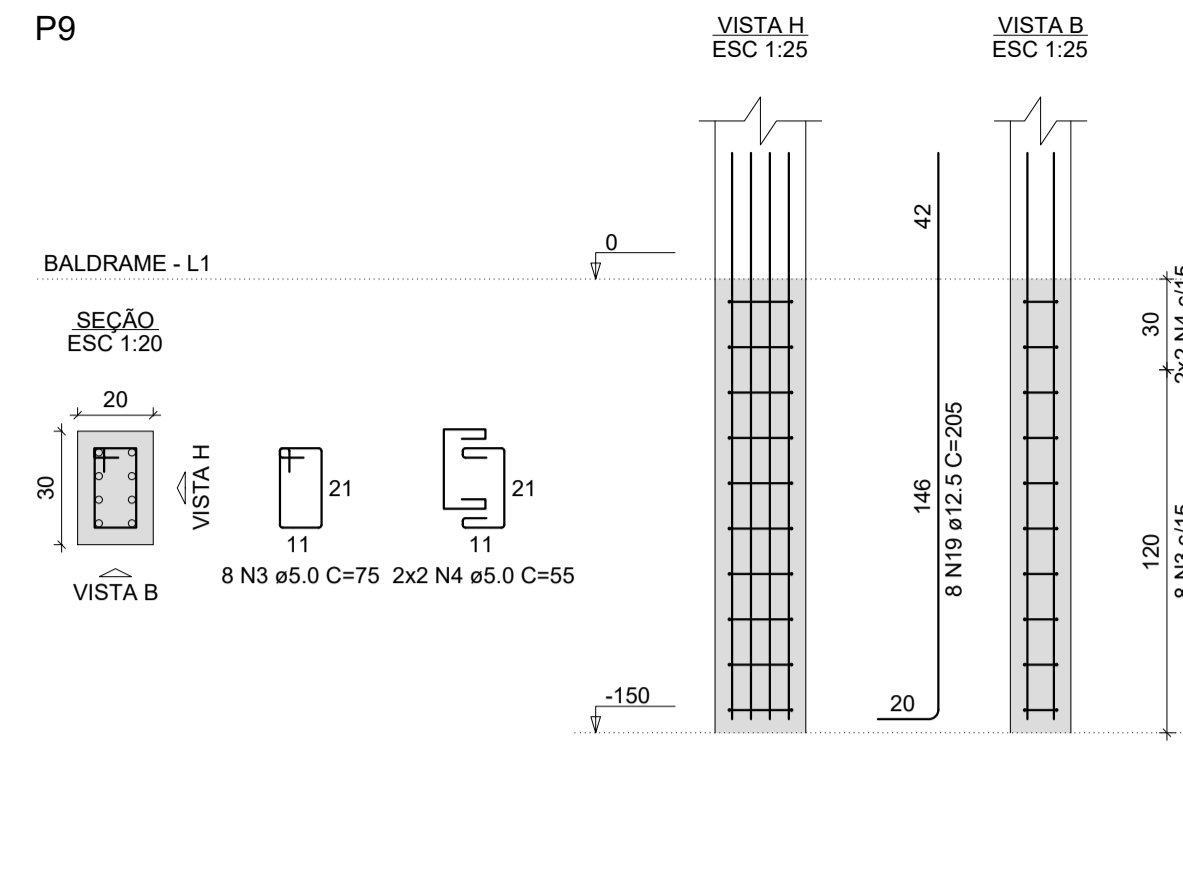
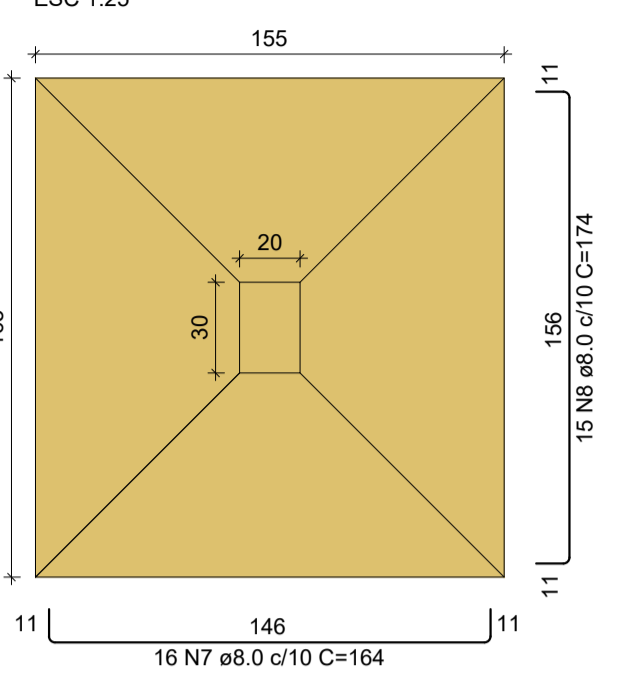


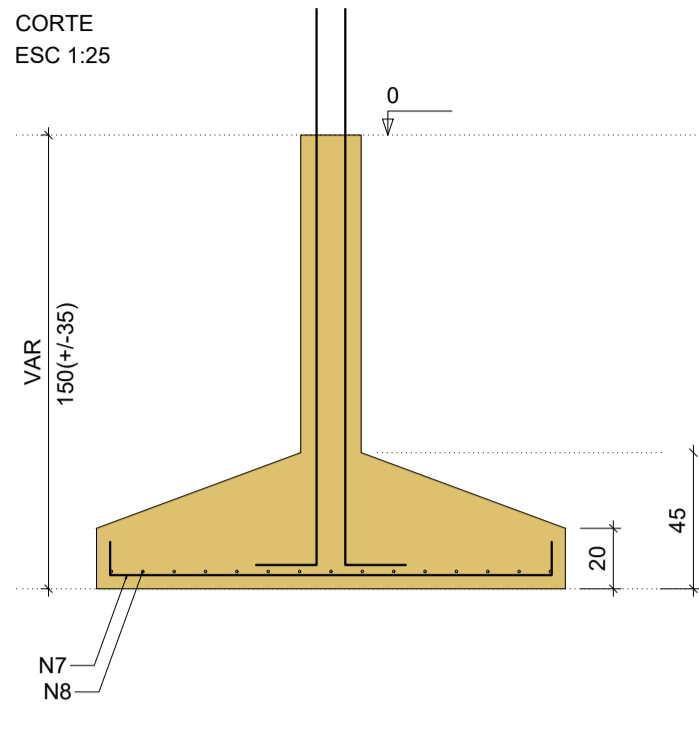
P9



S9
PLANTA
ESC 1:25

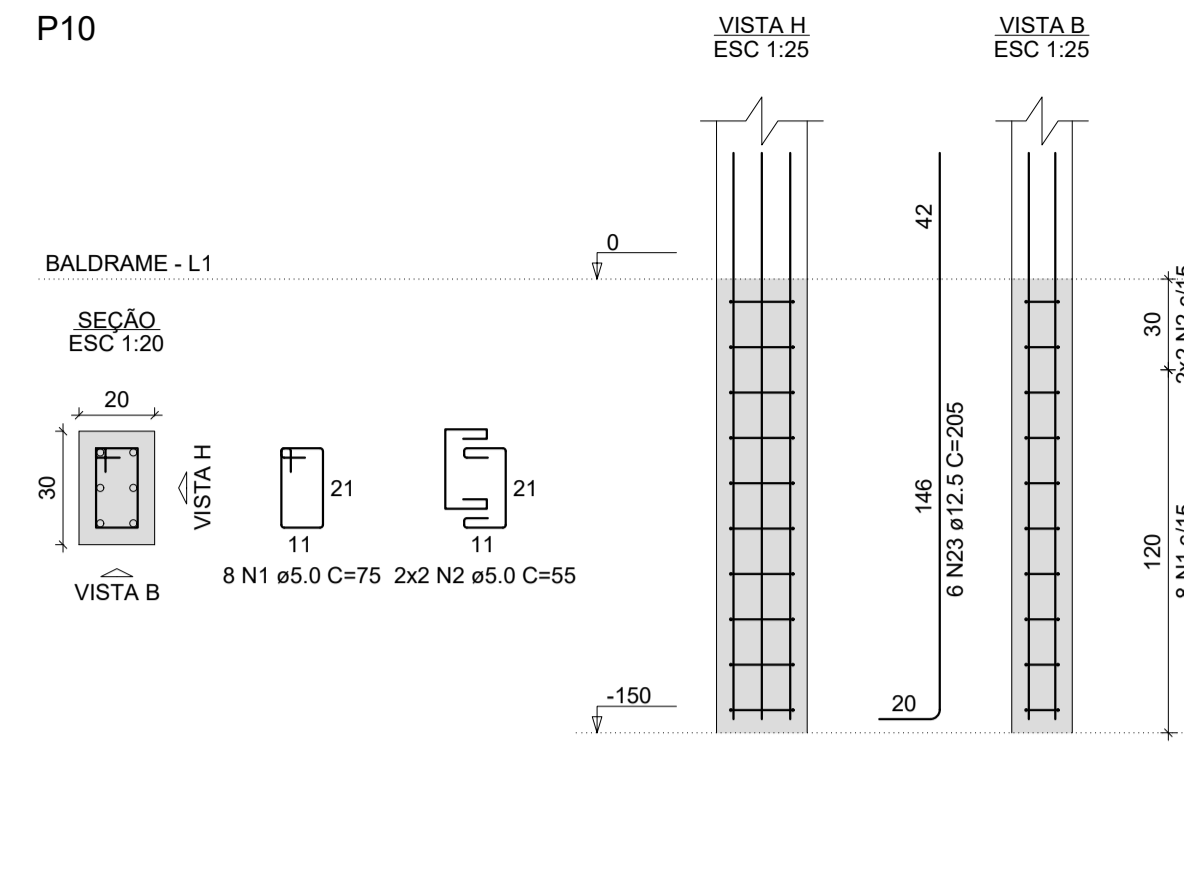


CORTE
ESC 1:25

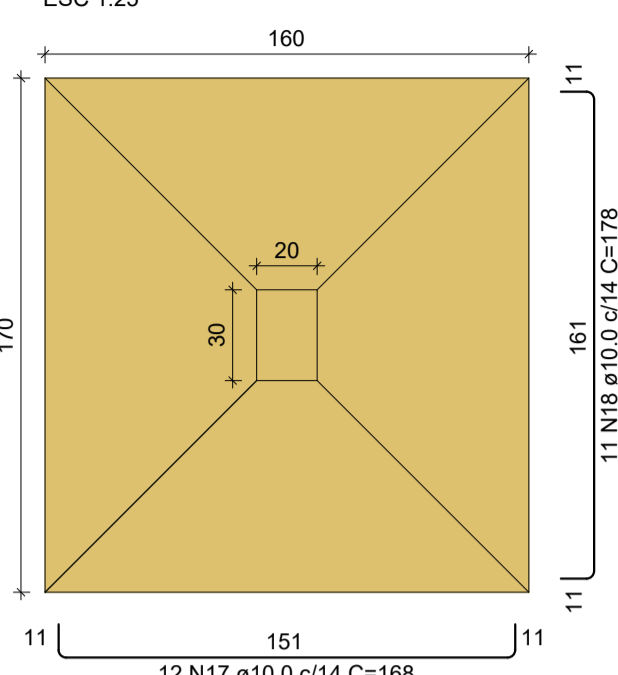


Solo com capacidade de suporte > 1.30 kgf/cm²
Solo compactado sobre a sapata
peso específico > 1500.00 kgf/m³

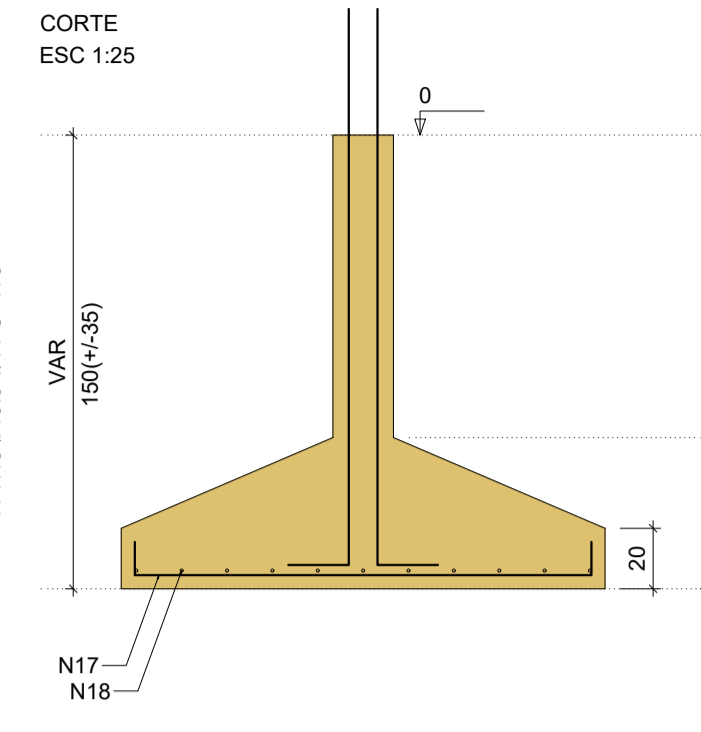
P10



S10
PLANTA
ESC 1:25

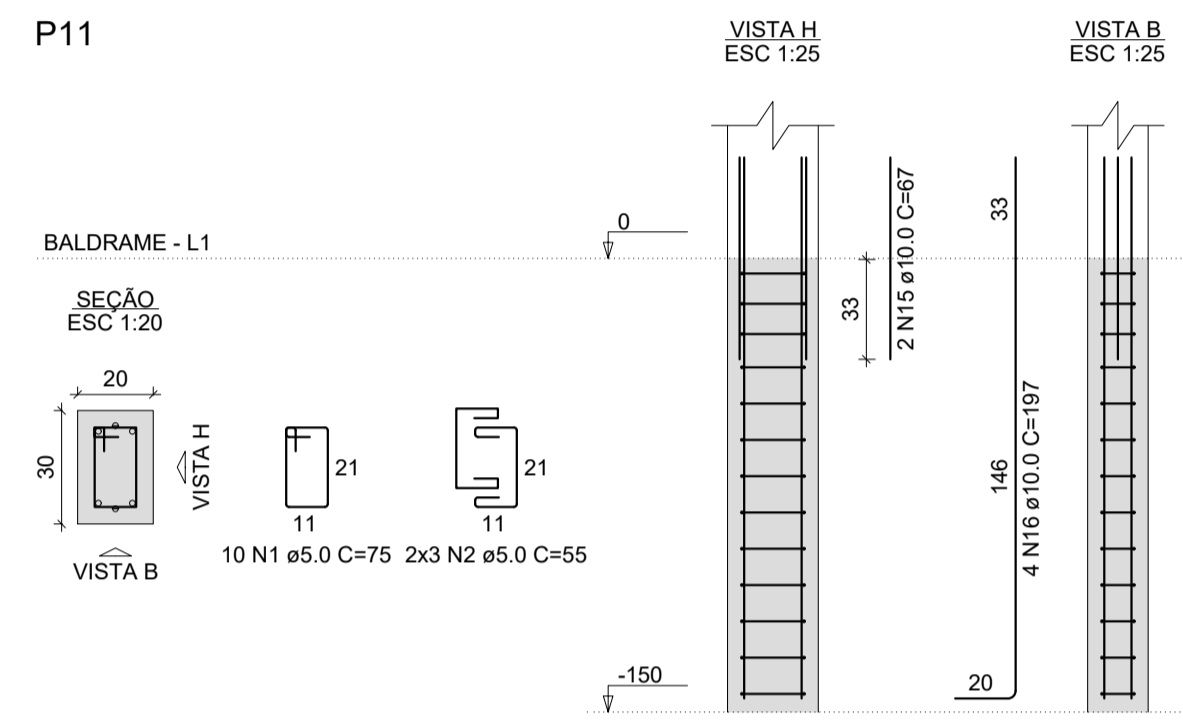


CORTE
ESC 1:25

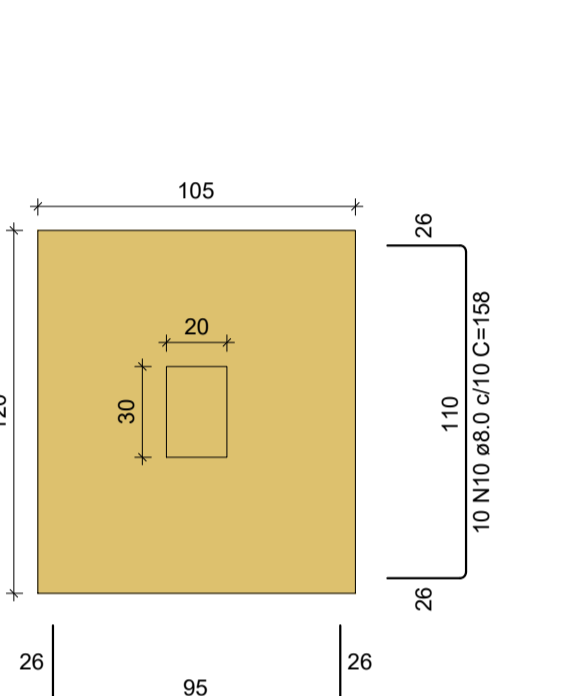


Solo com capacidade de suporte > 1.30 kgf/cm²
Solo compactado sobre a sapata
peso específico > 1500.00 kgf/m³

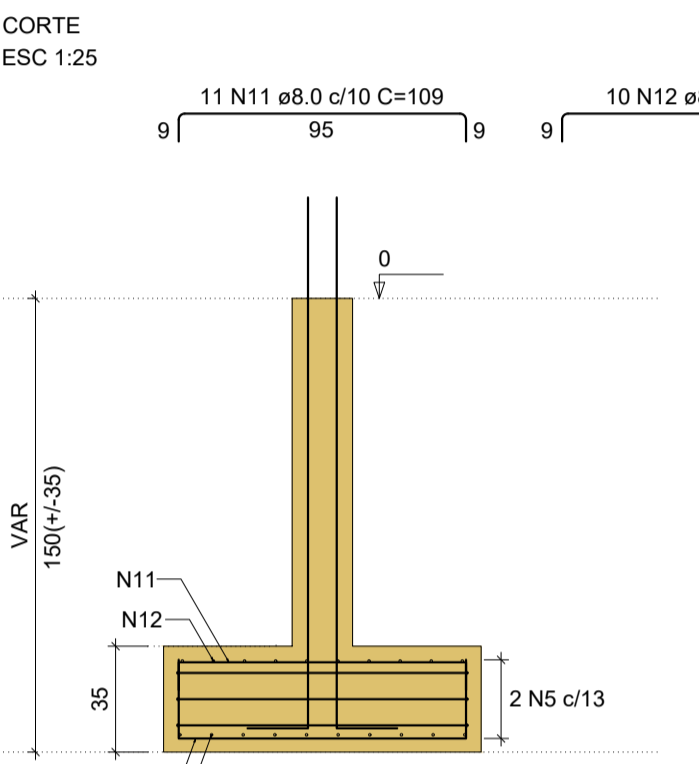
P11



S11
PLANTA
ESC 1:25

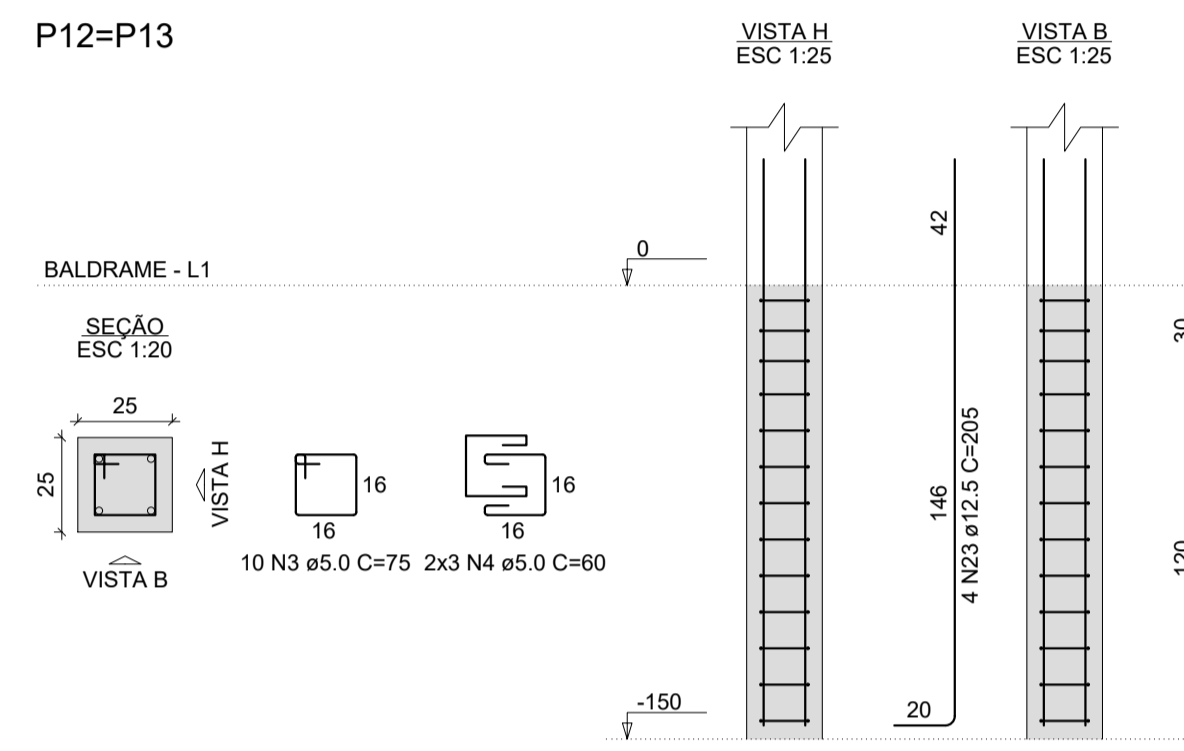


CORTE
ESC 1:25



Solo com capacidade de suporte > 1.30 kgf/cm²
Solo compactado sobre a sapata
peso específico > 1500.00 kgf/m³

P12=P13



RELAÇÃO DO AÇO

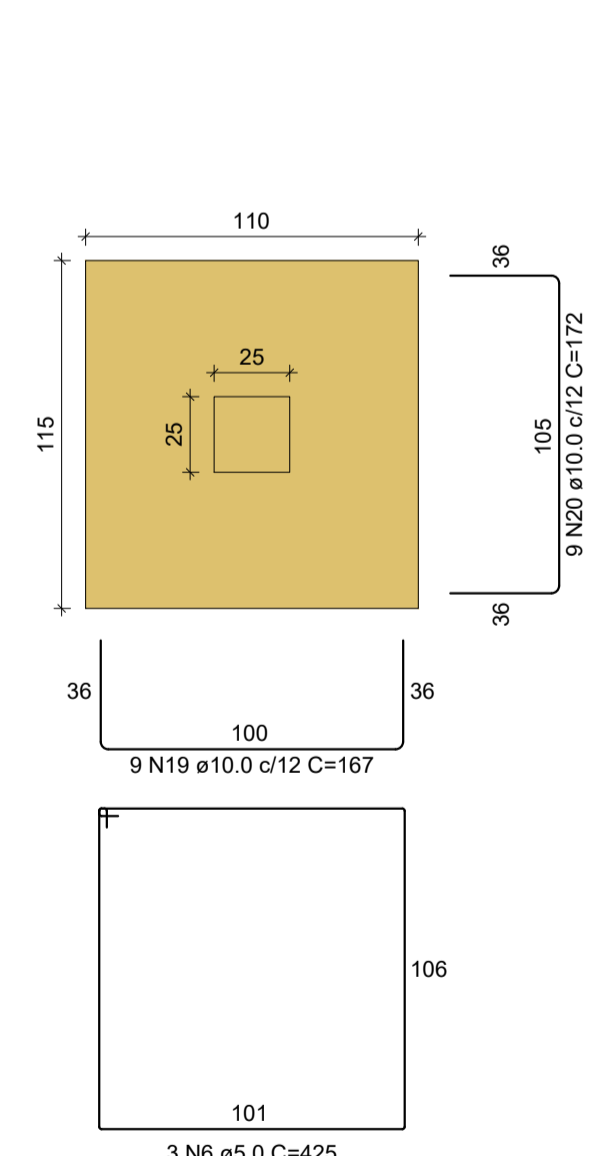
AÇO	N	DIAM (mm)	QUANT	C.UNIT (cm)	C.TOTAL (cm)
CA60	1	5.0	26	75	1950
CA60	2	5.0	14	55	770
CA60	3	5.0	20	75	1500
CA60	4	5.0	12	60	720
CA60	5	5.0	2	425	850
CA60	6	5.0	6	425	2550
CA60	7	8.0	16	164	2624
CA60	8	8.0	15	174	2610
CA60	9	8.0	12	143	1716
CA60	10	8.0	10	158	1580
CA60	11	8.0	11	109	1199
CA60	12	8.0	10	124	1240
CA60	13	8.0	15	149	2235
CA60	14	8.0	14	156	2226
CA60	15	10.0	2	67	134
CA60	16	10.0	4	197	788
CA60	17	10.0	12	168	2016
CA60	18	10.0	11	178	1958
CA60	19	10.0	18	167	3006
CA60	20	10.0	18	172	3096
CA60	21	10.0	18	119	2142
CA60	22	10.0	18	124	2232
CA60	23	12.5	18	205	3690

RESUMO DO AÇO

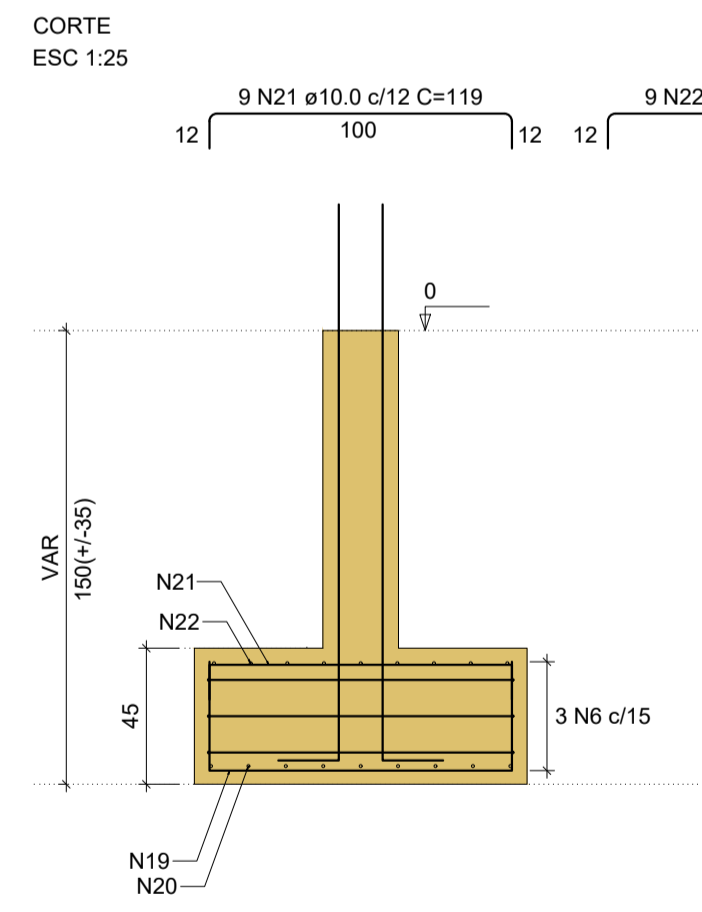
AÇO	DIAM (mm)	C.TOTAL (m)	PESO + 10% (kg)
CA50	8.0	154.3	67
CA50	10.0	153.7	104.3
CA50	12.5	36.9	39.1
CA60	5.0	83.4	14.1
PESO TOTAL (kg)			
CA50		210.3	
CA60		14.1	

Volume de concreto (C-30) = 0.32 m³
Volume de concreto (C-25) = 3.83 m³
Área de forma = 14.69 m²

S12=S13
PLANTA
ESC 1:25

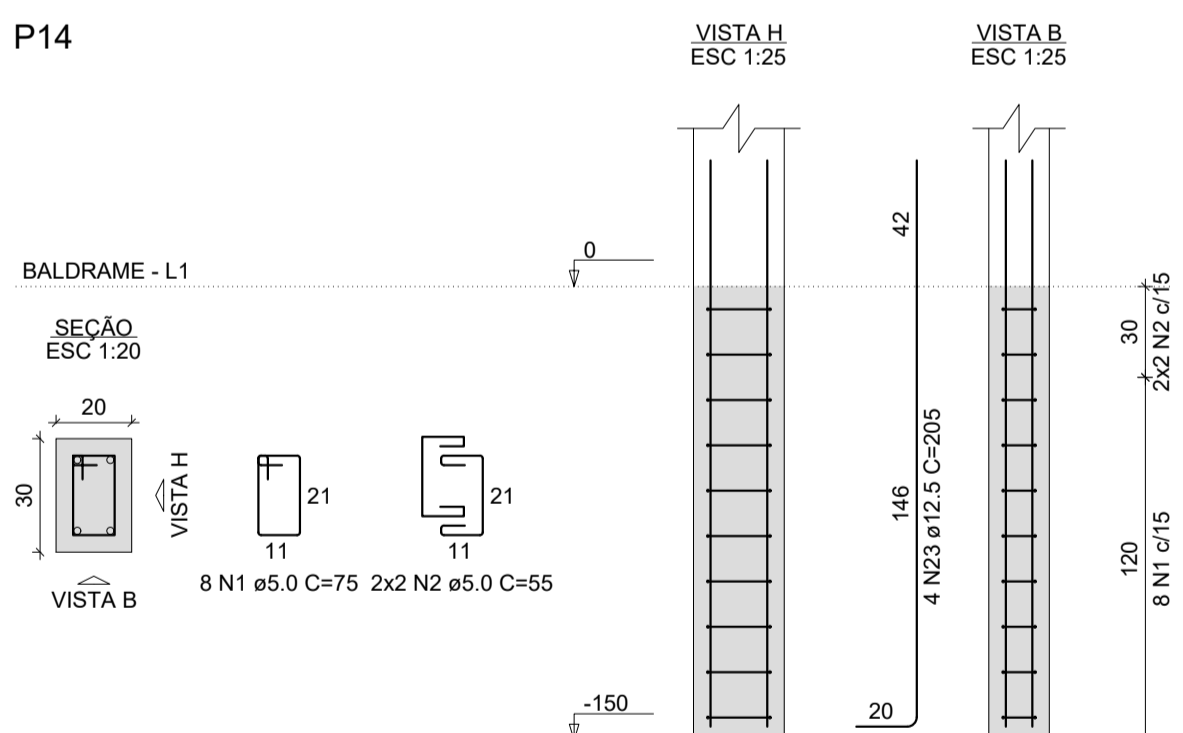


CORTE
ESC 1:25

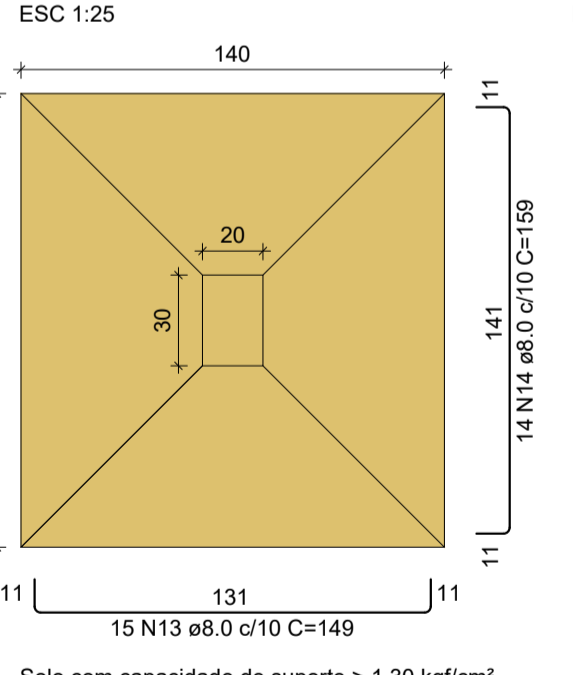


Solo com capacidade de suporte > 1.30 kgf/cm²
Solo compactado sobre a sapata
peso específico > 1500.00 kgf/m³

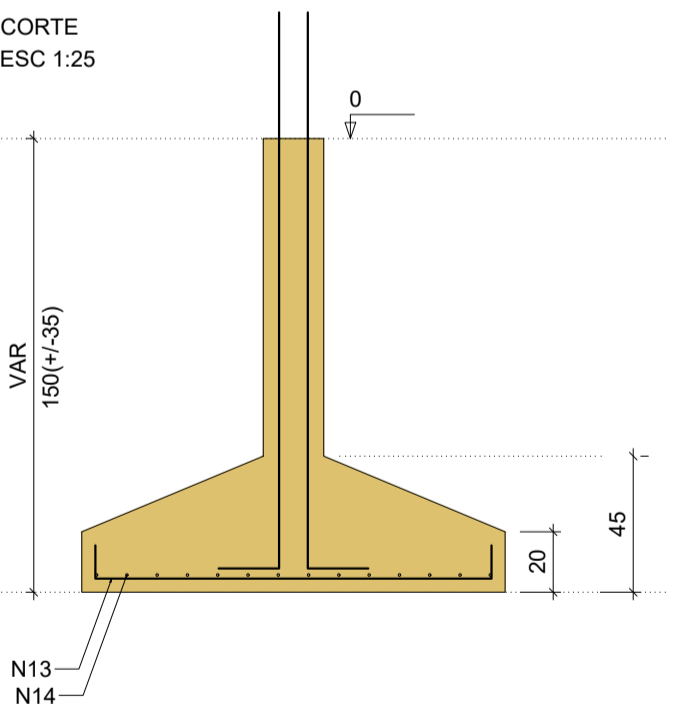
P14



S14
PLANTA
ESC 1:25

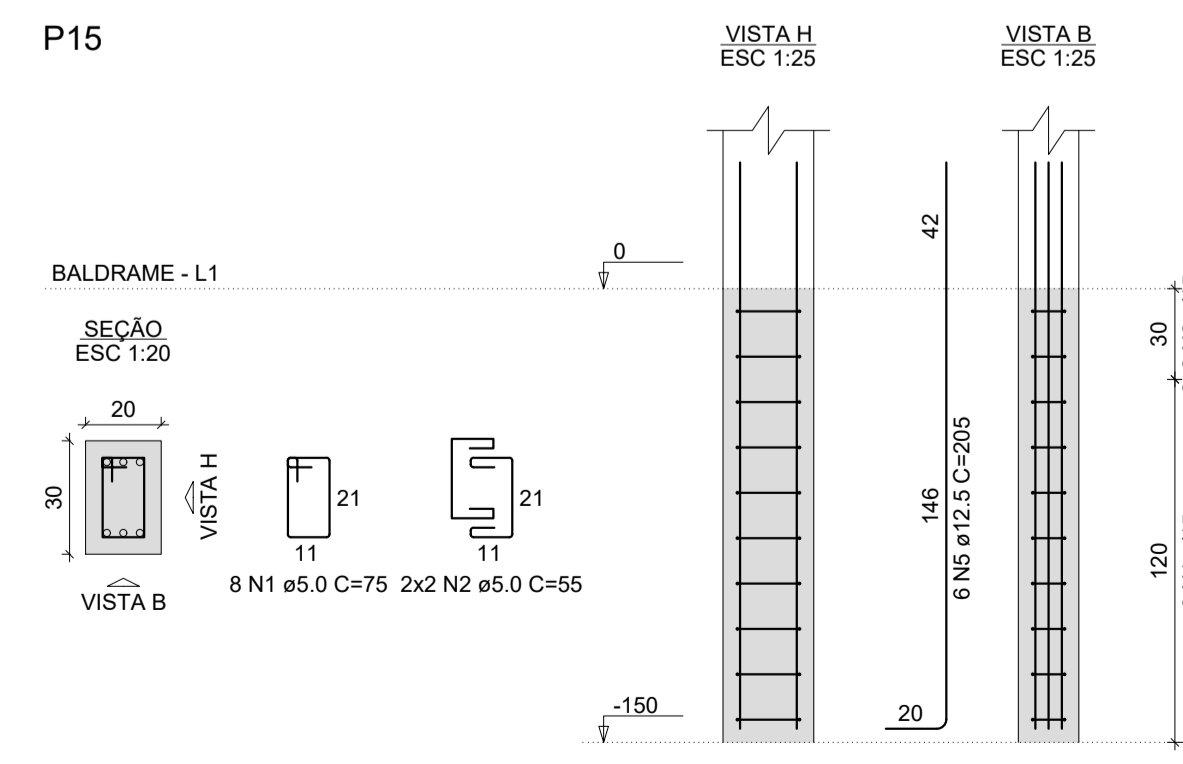


CORTE
ESC 1:25

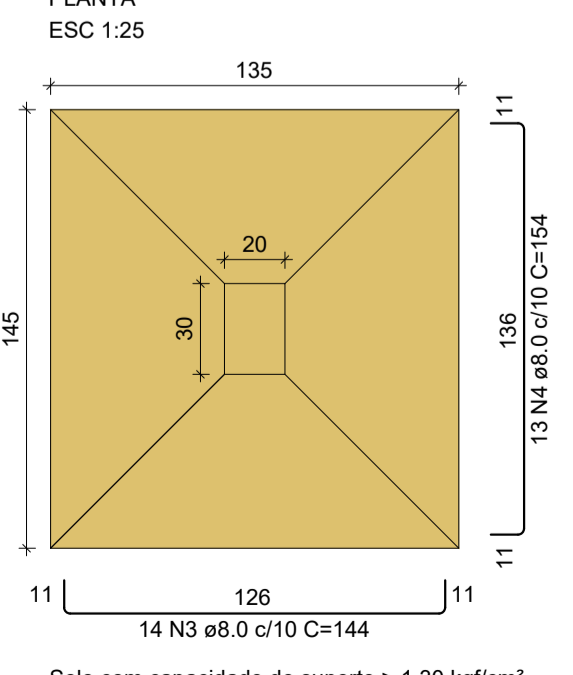


Solo com capacidade de suporte > 1.30 kgf/cm²
Solo compactado sobre a sapata
peso específico > 1500.00 kgf/m³

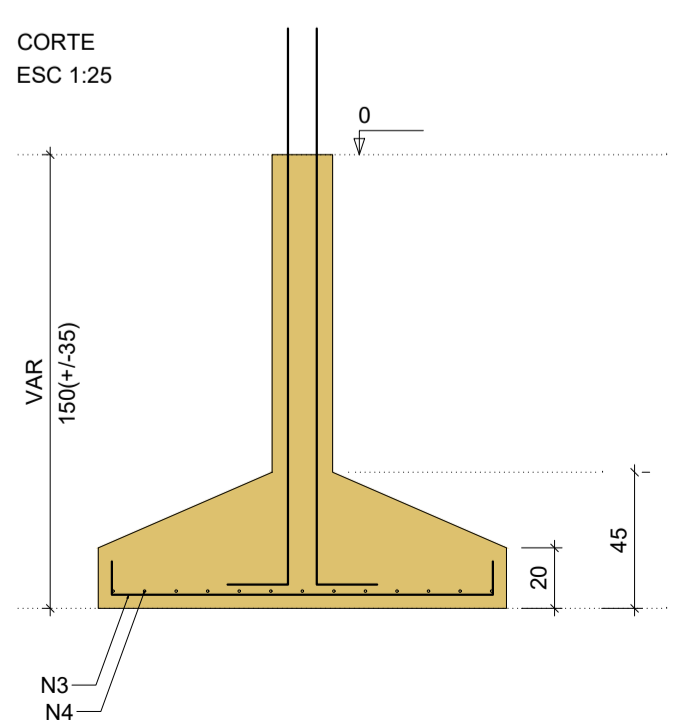
P15



S15
PLANTA
ESC 1:25



CORTE
ESC 1:25



Solo com capacidade de suporte > 1.30 kgf/cm²
Solo compactado sobre a sapata
peso específico > 1500.00 kgf/m³

RELAÇÃO DO AÇO

AÇO	N	DIAM (mm)	QUANT	C.UNIT (cm)	C.TOTAL (cm)
CA60	1	5.0	8	75	600
CA60	2	5.0	4	55	220
CA50	3	8.0	14	144	2016
CA50	4	8.0	13	154	2002
CA50	5	12.5	6	205	1230

RESUMO DO AÇO

AÇO	DIAM (mm)	C.TOTAL (m)	PESO + 10% (kg)
CA50	8.0	40.2	17.4
CA50	12.5	12.3	13
CA60	5.0	8.2	1.4
PESO TOTAL (kg)			
CA50		30.5	
CA60		1.4	

Volume de concreto (C-30) = 0.06 m³
Volume de concreto (C-25) = 0.59 m³
Área de forma = 2.17 m²

GeoNorte Projetos e Topografia
GEONORTE PROJETOS LTDA.
 Av. Brasil, 79, sala 09, Centro - Xanxerê (SC) - 89820-000
 www.geonorte.net.br / contato@geonorte.net.br
 Telefone: (49) 3433-8176

PROJETO ESTRUTURAL EDIFICAÇÃO 01:
REFORMA E AMPLIAÇÃO DO CENTRO COMUNITÁRIO DO BAIRRO SÃO CRISTÓVÃO

LOCALIDADES:
 MUNICÍPIO: FAXINAL DOS GUEDES ESTADO UF: SC
 DATA: 10/2023 ESCALA: indicada

Conteúdo:
 DETALHAMENTO DE SAPATAS E ARRANQUES 2/2

Folha:
04/11

Prop.:
 PREFEITURA MUNICIPAL DE FAXINAL DOS GUEDES
 CNPJ:

Resp. Téc.:
 CARLO ANTUNES DOS SANTOS
 ENGENHEIRO CIVIL
 CREA-SC 123.879-1