

RELAÇÃO DO AÇO

AÇO	N	DIAM (mm)	QUANT	C.UNIT (cm)	C.TOTAL (cm)
CA60	1	5.0	186	77	14322
CA50	2	5.0	9	24	216
	3	6.3	1	71	71
	4	8.0	4	250	1000
	5	8.0	1	189	189
	6	8.0	4	242	968
	7	8.0	4	927	3708
	8	8.0	2	943	1886
	9	10.0	2	265	530
	10	10.0	26	81	2106
	11	10.0	1	164	164
	12	10.0	2	277	554
	13	10.0	2	256	512
	14	10.0	2	950	1900
	15	12.5	2	255	510

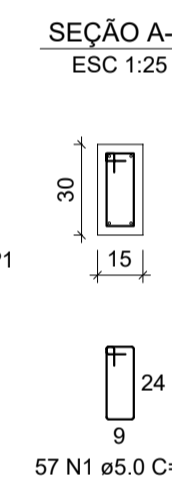
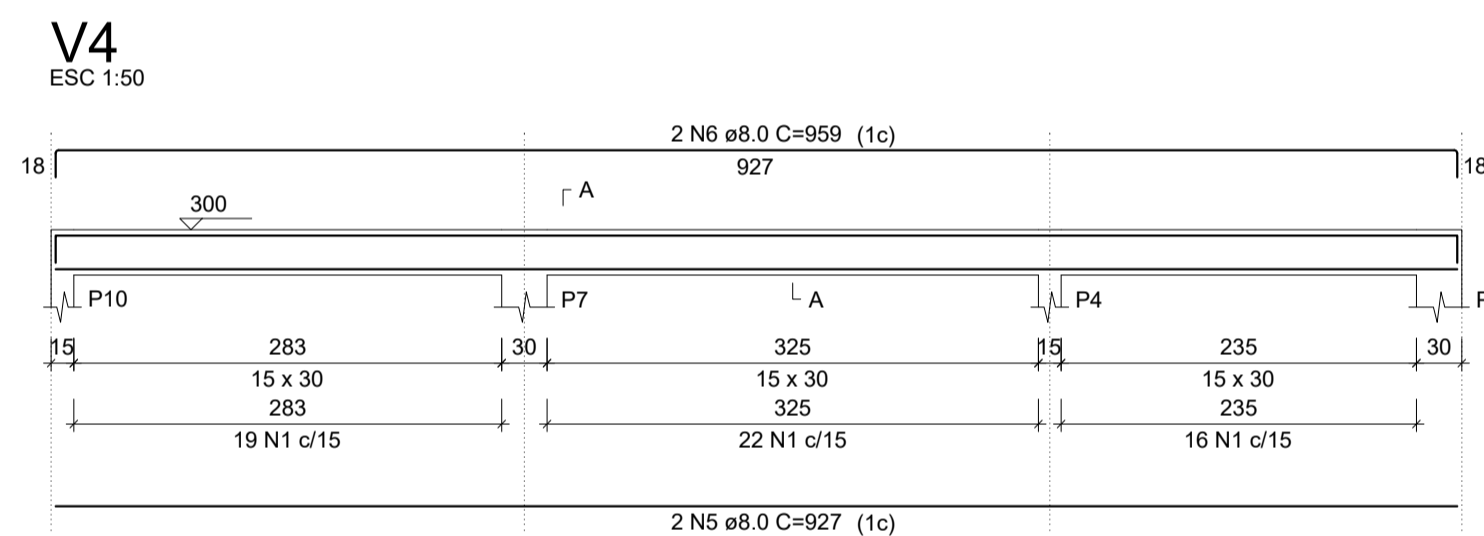
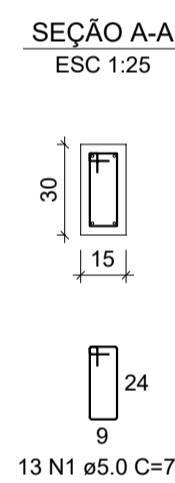
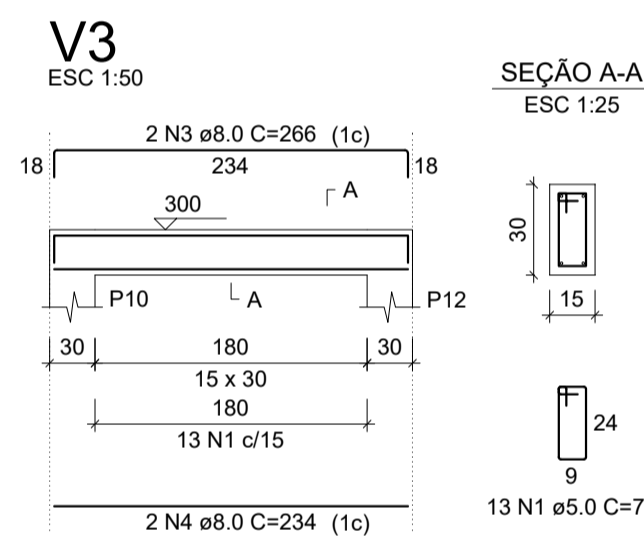
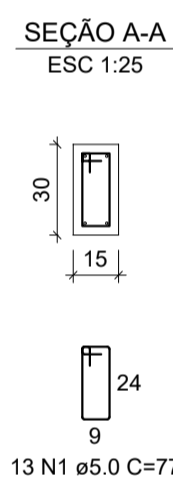
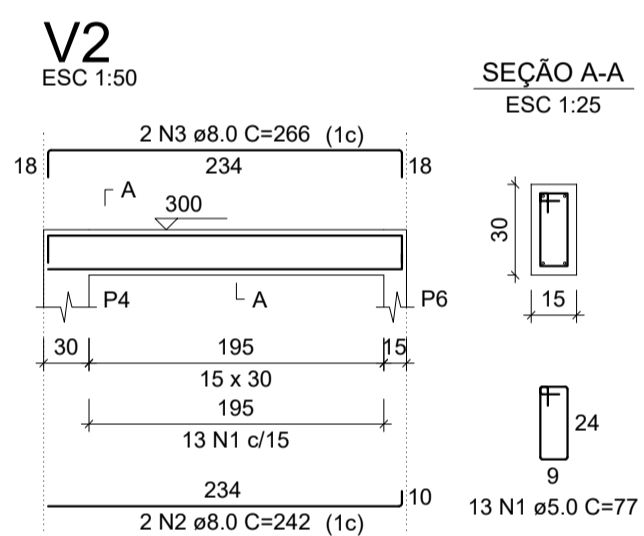
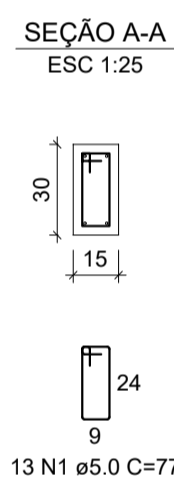
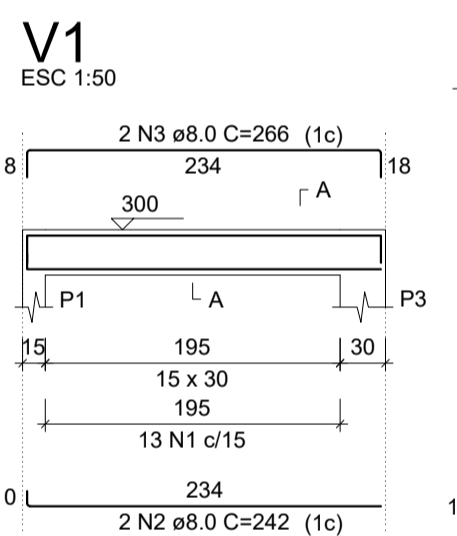
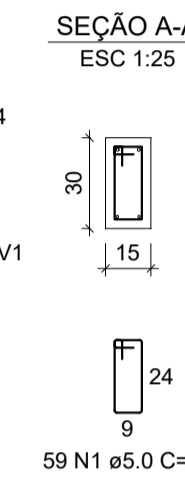
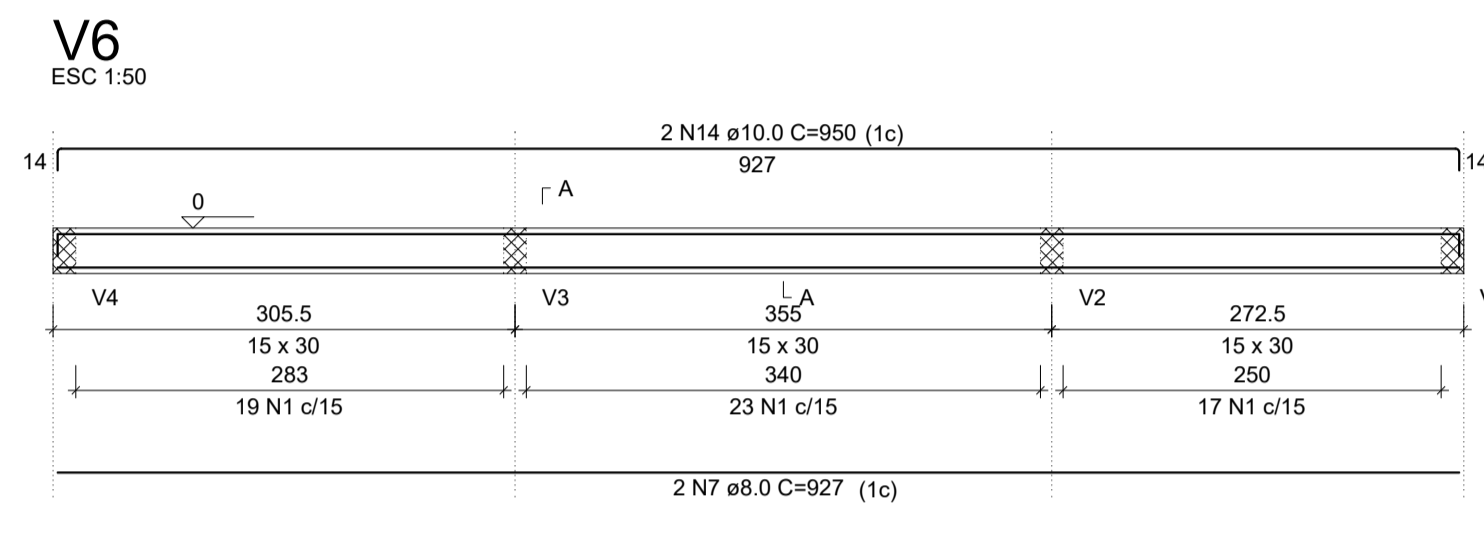
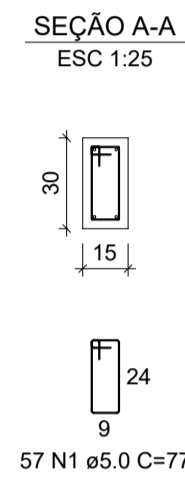
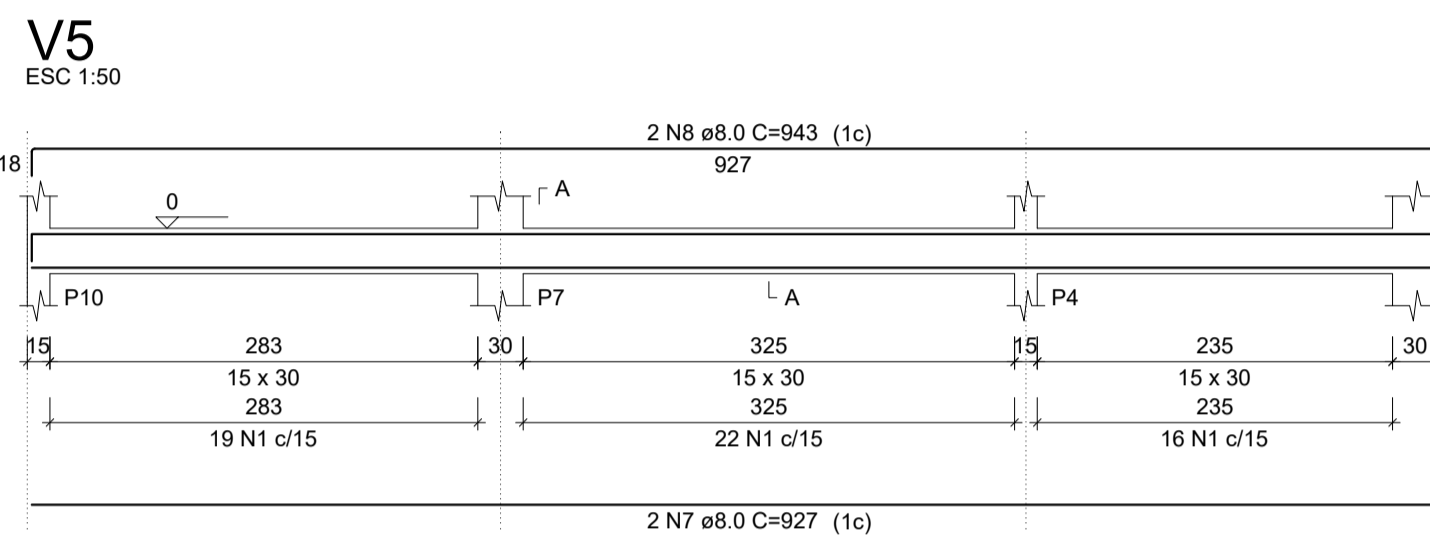
RESUMO DO AÇO

AÇO	DIAM (mm)	C.TOTAL (m)	PESO + 10% (kg)
CA50	6.3	0.7	0.2
	8.0	77.5	33.6
	10.0	57.7	39.1
	12.5	5.1	5.4
CA60	5.0	145.4	24.6

PESO TOTAL (kg)

CA50	78.3
CA60	24.6

Volume de concreto (C-30) = 1.14 m³
Área de forma = 18.87 m²



RELAÇÃO DO AÇO

AÇO	N	DIAM (mm)	QUANT	C.UNIT (cm)	C.TOTAL (cm)
CA60	1	5.0	153	77	11781
CA50	2	8.0	4	242	968
	3	8.0	6	286	1596
	4	8.0	2	234	468
	5	8.0	4	927	3708
	6	8.0	4	959	3836

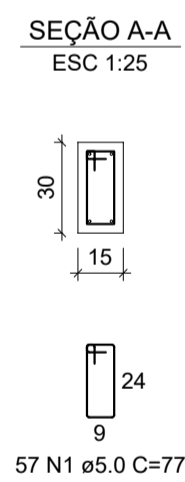
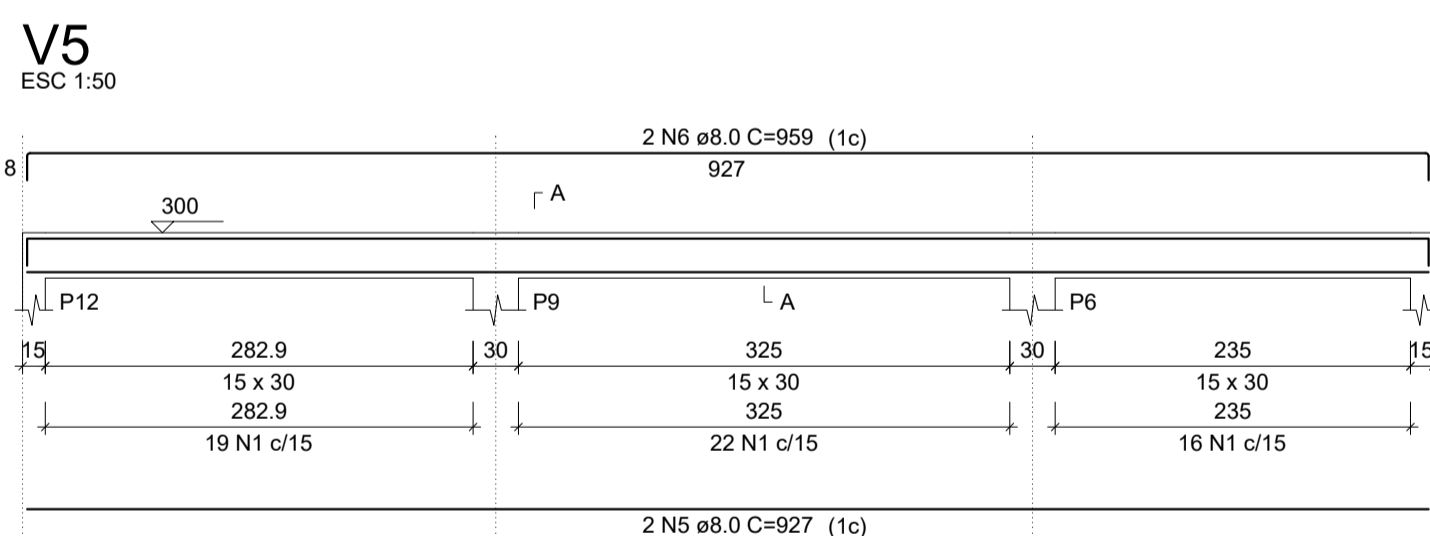
RESUMO DO AÇO

AÇO	DIAM (mm)	C.TOTAL (m)	PESO + 10% (kg)
CA50	8.0	105.8	45.9
CA60	5.0	117.8	20

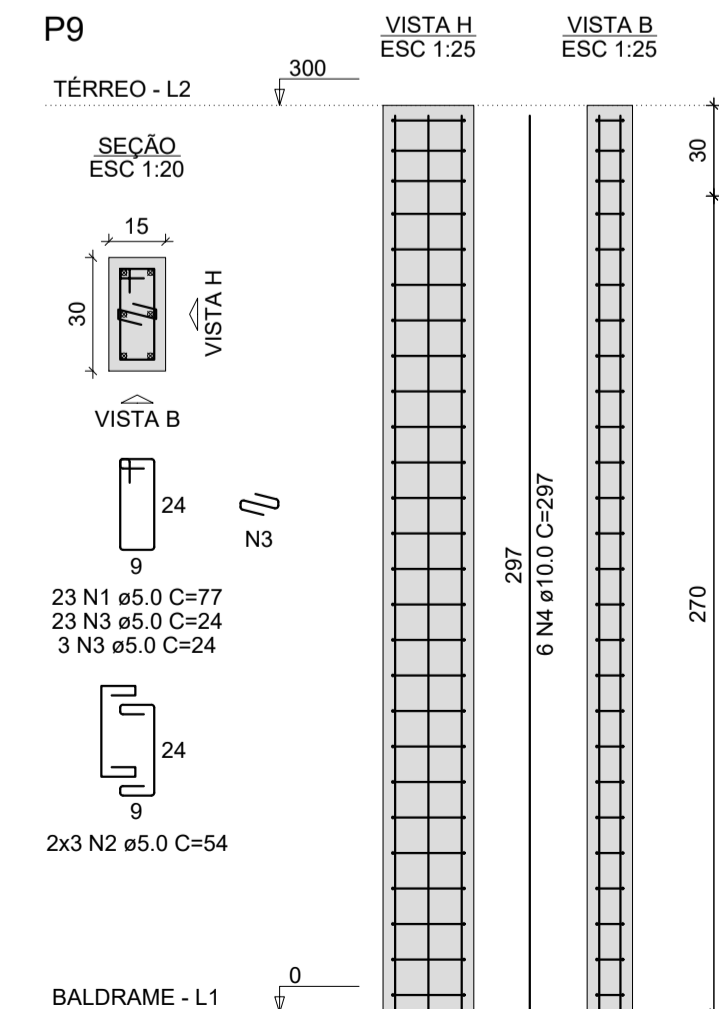
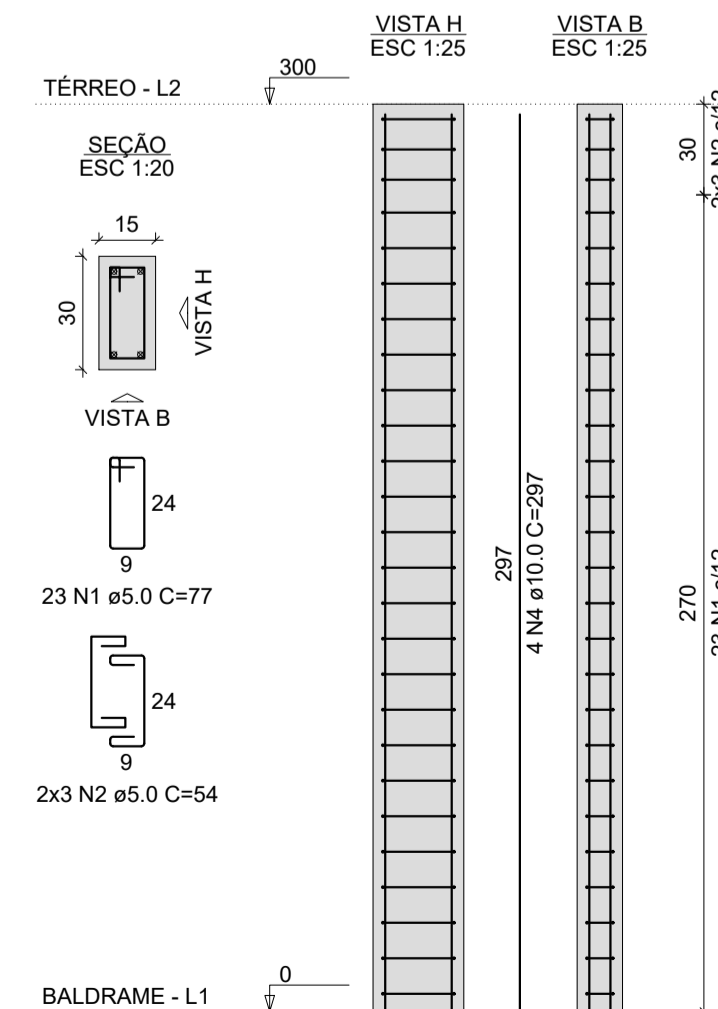
PESO TOTAL (kg)

CA50	45.9
CA60	20

Volume de concreto (C-30) = 1.02 m³
Área de forma = 16.92 m²



P1=P3=P4=P6=P7=P10=
=P12



RELAÇÃO DO AÇO

AÇO	N	DIAM (mm)	QUANT	C.UNIT (cm)	C.TOTAL (cm)
CA60	1	5.0	184	77	14168
CA50	2	5.0	48	54	2592
	3	5.0	26	24	624
CA50	4	10.0	34	297	10098

RESUMO DO AÇO

AÇO	DIAM (mm)	C.TOTAL (m)	PESO + 10% (kg)
CA50	10.0	101	68.5
CA60	5.0	173.8	29.5

PESO TOTAL (kg)

CA50	68.5
CA60	29.5

Volume de concreto (C-30) = 1.08 m³
Área de forma = 21.60 m²

GeoNorte
Projetos e Topografia

GEONORTE PROJETOS LTDA.
Av. Brasil, 79, sala 09, Centro - Xanxerê (SC) - 89820-000
www.geonorte.net.br / contato@geonorte.net.br
Telefone: (49) 3433-8176

PROJETO ESTRUTURAL EDIFICAÇÃO 02:
REFORMA E AMPLIAÇÃO DO CENTRO COMUNITÁRIO DO BAIRRO SÃO CRISTÓVÃO

LOCALIDADES:
MUNICÍPIO: FAXINAL DOS GUEDES ESTADO UF: SC
DATA: 10/2023 ESCALA: indicada

Conteúdo:
DETALHAMENTO PILARES
DETALHAMENTO VIGAS BALDRAME
DETALHAMENTO VIGAS DE COBERTURA

Folha:
04/04

Prop.:
PREFEITURA MUNICIPAL DE FAXINAL DOS GUEDES
CNPJ:

Resp. Téc.:
CARLO ANTUNES DOS SANTOS
ENGENHEIRO CIVIL
CREA-SC 123.879-1