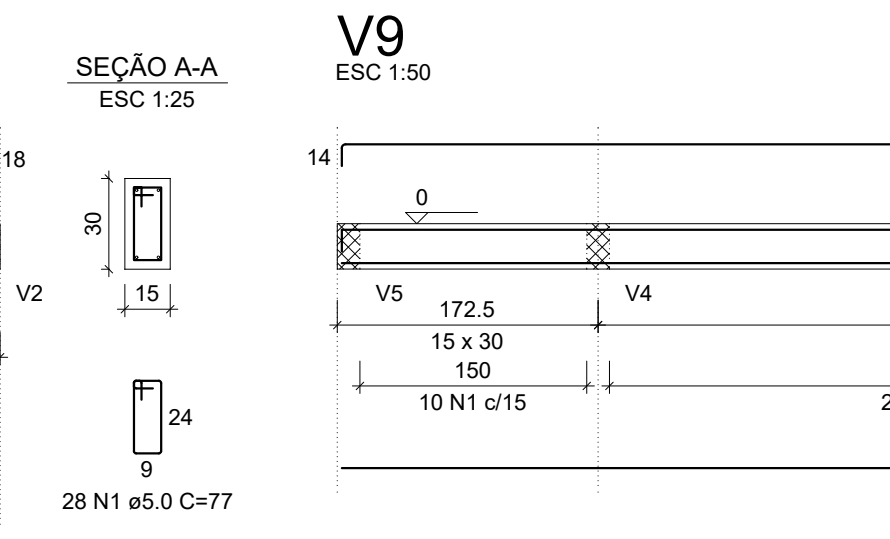
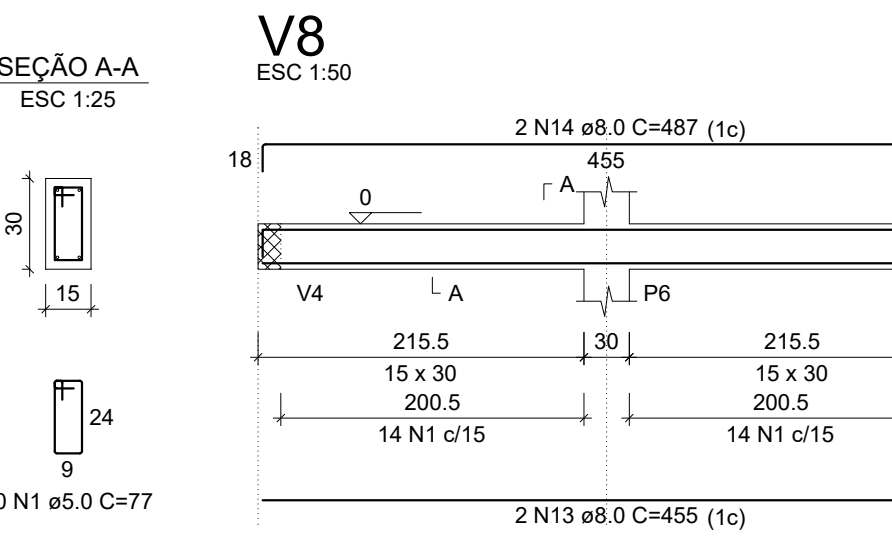
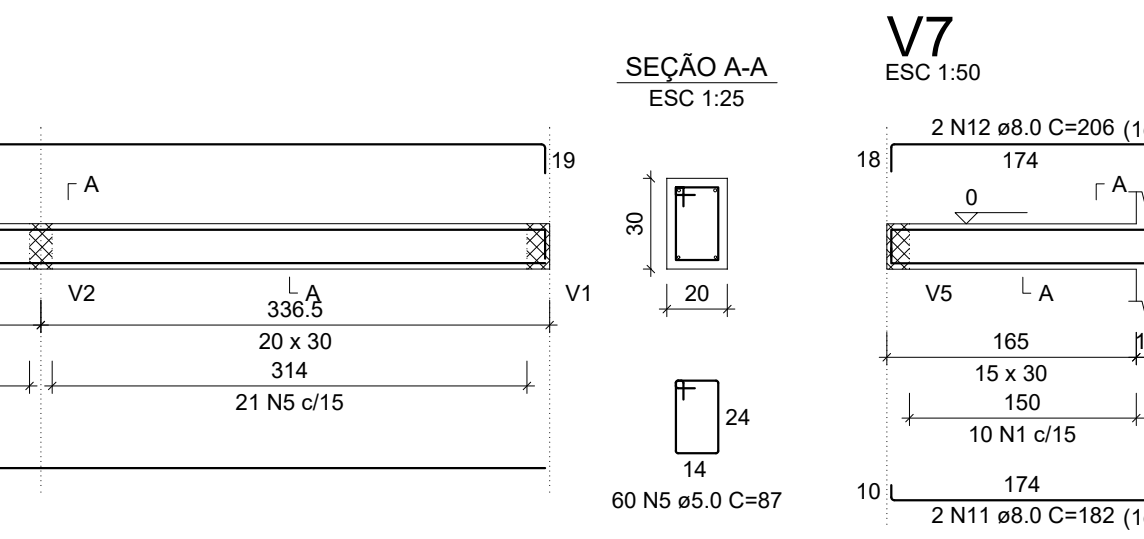
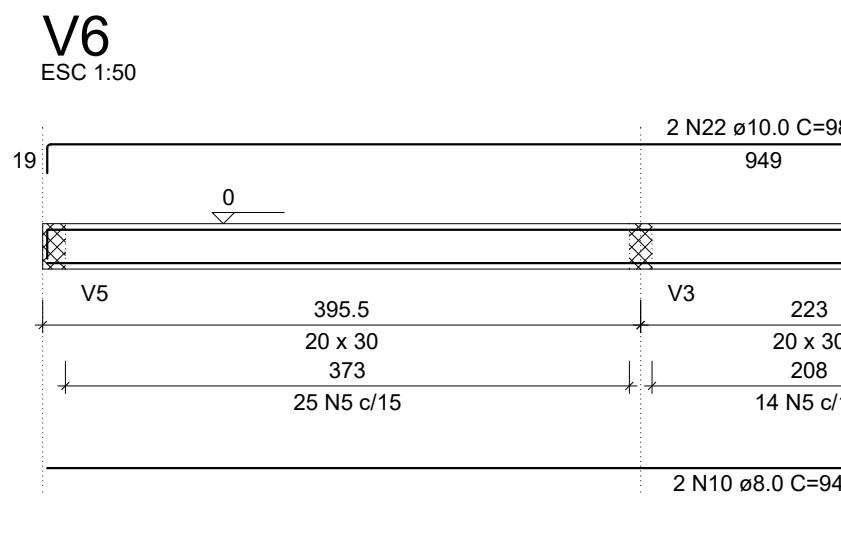


RELAÇÃO DO AÇO

AÇO	N	DIAM (mm)	QUANT	C.UNIT (cm)	C.TOTAL (cm)
V1	1	5.0	205	77	15785
V4	2	5.0	6	75	450
V7	3	5.0	6	21	126
	4	5.0	5	75	375
CA50	5	5.0	60	87	5220
	6	8.0	6	400	2400
	7	8.0	2	428	856
	8	8.0	2	280	560
	9	8.0	2	236	472
	10	8.0	4	949	3796
	11	8.0	2	182	364
	12	8.0	2	206	412
	13	8.0	2	455	910
	14	8.0	2	487	974
	15	10.0	18	81	1458
	16	10.0	2	161	322
	17	10.0	2	286	572
	18	10.0	1	146	146
	19	10.0	2	250	500
	20	10.0	1	201	201
	21	10.0	2	427	854
	22	10.0	2	982	1964
	23	10.0	2	972	1944
	24	12.5	1	149	149
	25	12.5	2	426	852
	26	12.5	6	89	534

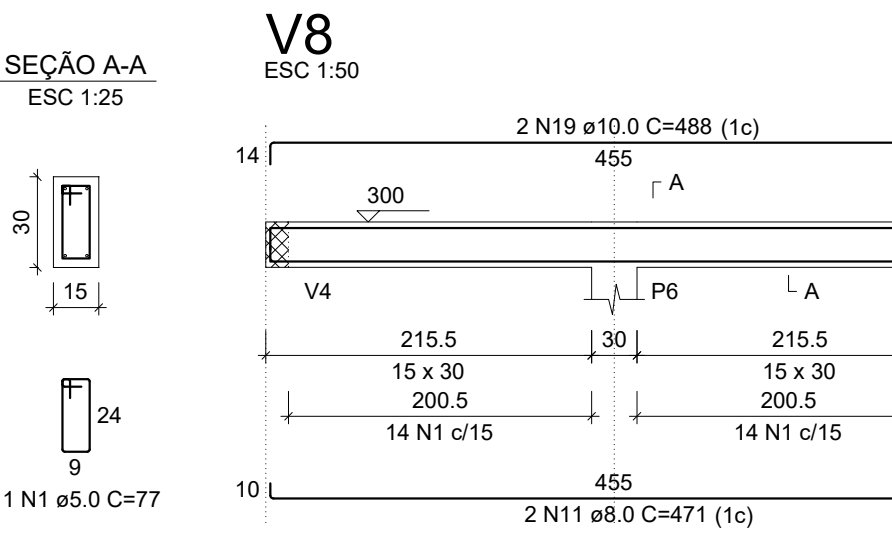
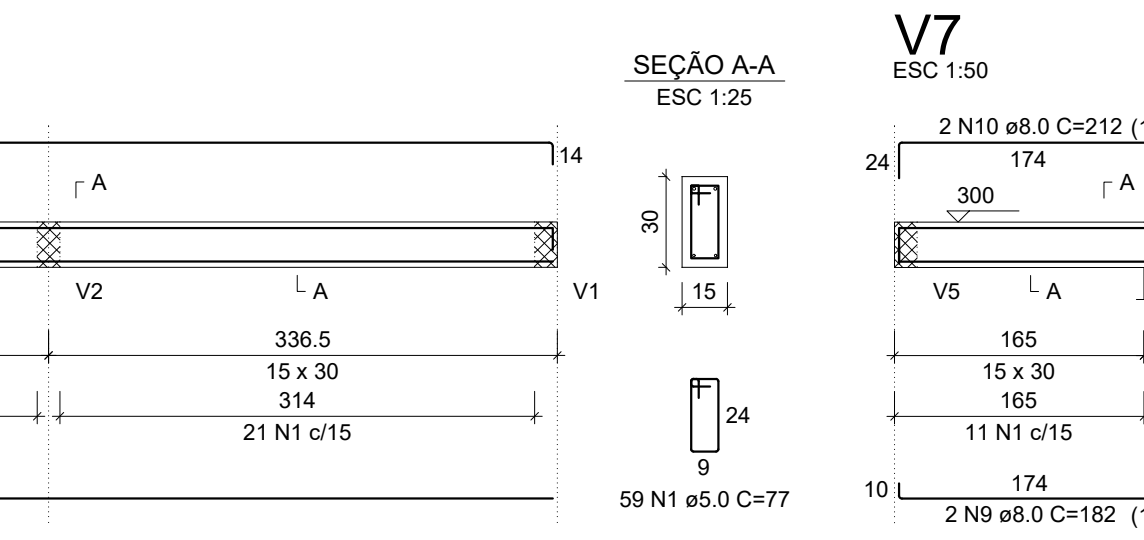
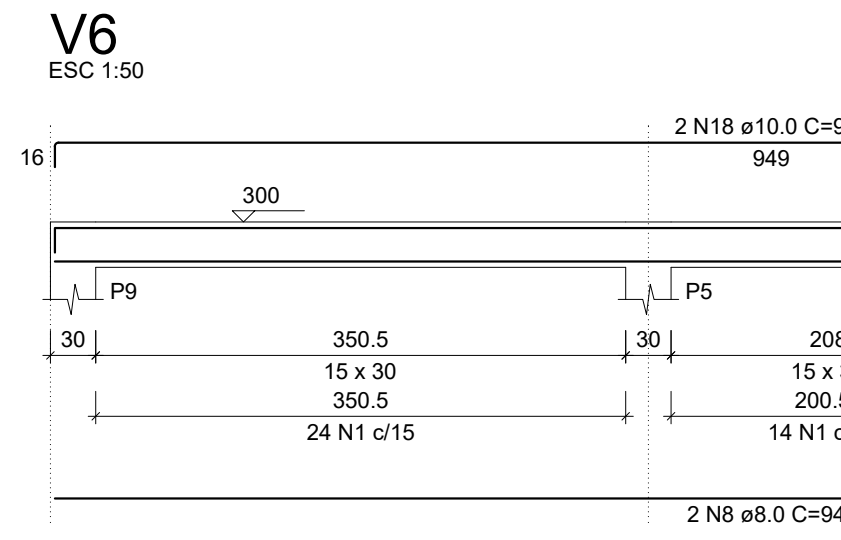
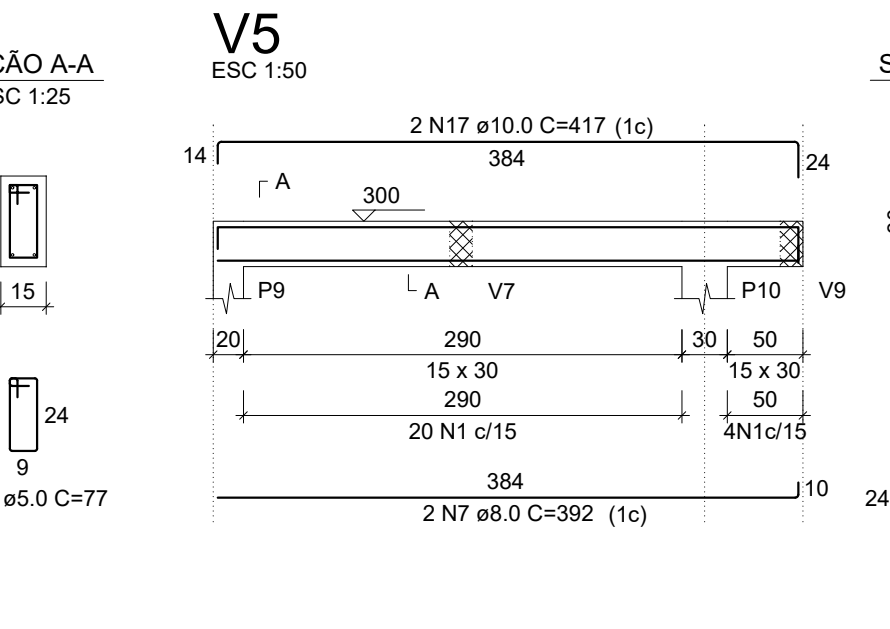
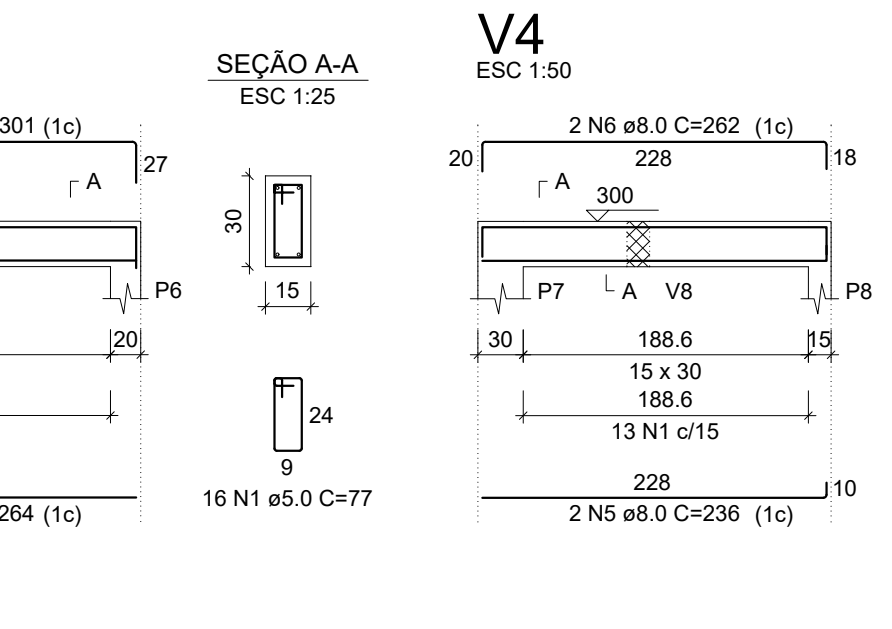
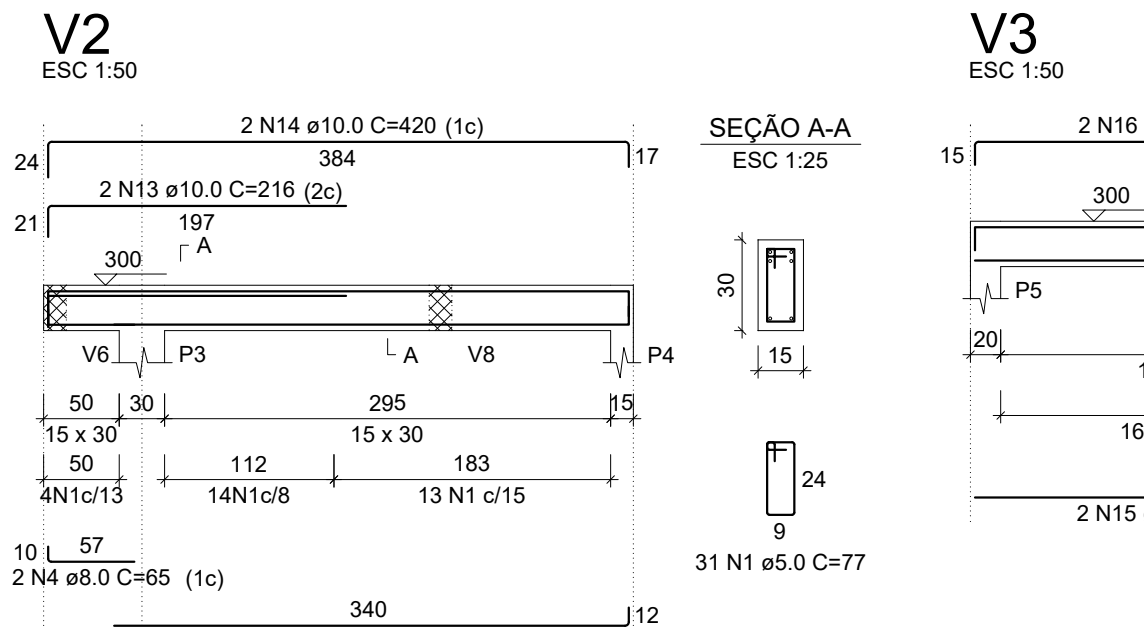
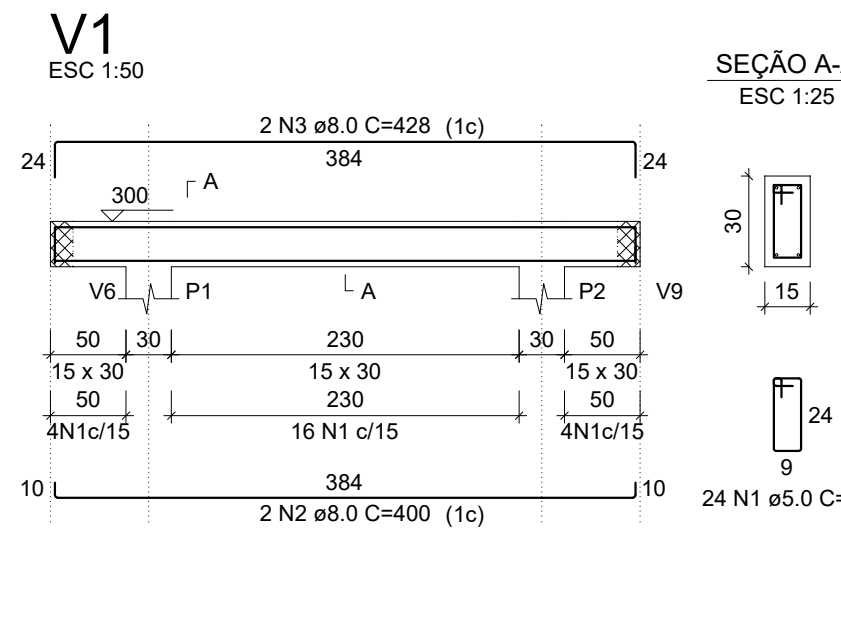


RESUMO DO AÇO

AÇO	DIAM (mm)	C.TOTAL (m)	PESO + 10% (kg)
CA50	8.0	107.4	46.6
CA50	10.0	79.6	54
CA60	12.5	15.3	16.3
CA60	5.0	219.6	37.2

PESO TOTAL (kg)  
CA50 116.9  
CA60 37.2

Volume de concreto (C-30) = 1.87 m³  
Área de forma = 29.14 m²



RELAÇÃO DO AÇO

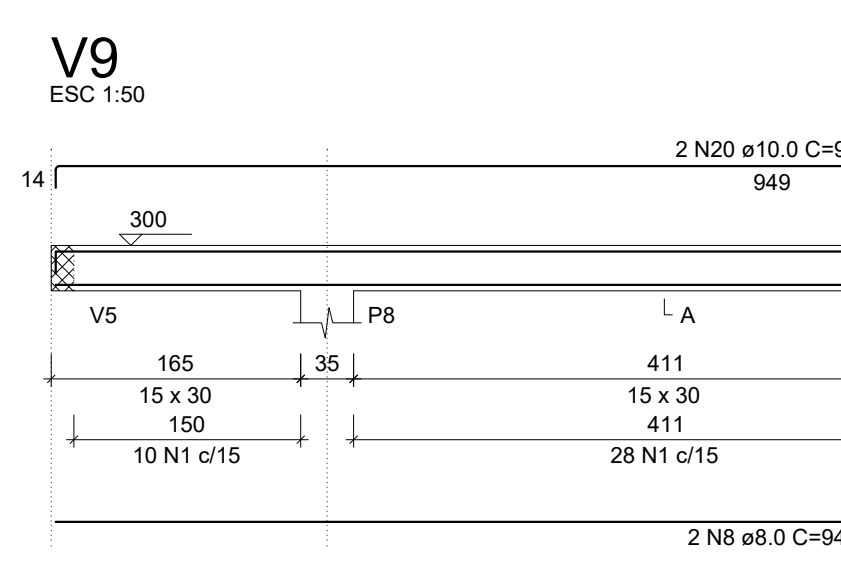
AÇO	N	DIAM (mm)	QUANT	C.UNIT (cm)	C.TOTAL (cm)
CA60	1	5.0	264	77	20328
CA50	2	8.0	2	400	800
	3	8.0	2	428	856
	4	8.0	2	65	130
	5	8.0	2	236	472
	6	8.0	2	262	524
	7	8.0	2	392	784
	8	8.0	4	949	3796
	9	8.0	2	182	364
	10	8.0	2	212	424
	11	8.0	2	471	942
	12	10.0	2	350	700
	13	10.0	2	216	432
	14	10.0	2	420	840
	15	10.0	2	284	568
	16	10.0	2	301	602
	17	10.0	2	417	834
	18	10.0	2	974	1948
	19	10.0	2	488	976
	20	10.0	2	972	1944

RESUMO DO AÇO

AÇO	DIAM (mm)	C.TOTAL (m)	PESO + 10% (kg)
CA50	8.0	90.9	39.5
CA60	10.0	88	59.7
CA60	5.0	203.3	34.5

PESO TOTAL (kg)  
CA50 99.2  
CA60 34.5

Volume de concreto (C-30) = 1.68 m³  
Área de forma = 26.62 m²



**GeoNorte**  
Projetos e Topografia

**GEONORTE PROJETOS LTDA.**  
Av. Brasil, 79, sala 09, Centro - Xanxerê (SC) - 89820-000  
www.geonorte.net.br / contato@geonorte.net.br  
Telefone: (49) 3433-8176

PROJETO ESTRUTURAL EDIFICAÇÃO 03:  
REFORMA E AMPLIAÇÃO DO CENTRO COMUNITÁRIO DO BAIRRO SÃO CRISTÓVÃO

LOCALIDADES:  
MUNICÍPIO: FAXINAL DOS GUEDES ESTADO UF: SC  
DATA: 10/2023 ESCALA: indicada

Conteúdo:  
DETALHAMENTO VIGAS BALDRAMES  
DETALHAMENTO VIGAS DE COBERTURA

Folha:  
**05/06**

Prop.:  
PREFEITURA MUNICIPAL DE FAXINAL DOS GUEDES  
CNPJ:

Resp. Téc.:  
CARLO ANTUNES DOS SANTOS  
ENGENHEIRO CIVIL  
CREA-SC 123.879-1