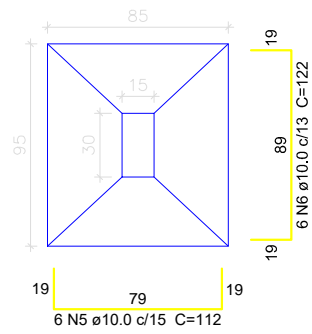


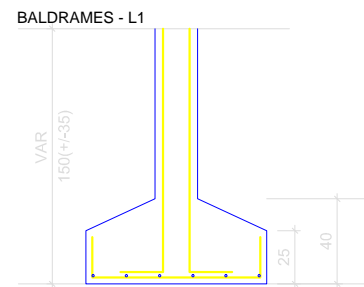
Detalhamento Sapatas

S1-S3-S6-S7-S8-S9

PLANTA
ESC 1:25



CORTE
ESC 1:25



Solo com capacidade de suporte > 1.75 kgf/cm²
Solo compactado sobre a sapata
peso específico > 1600.00 kgf/m³

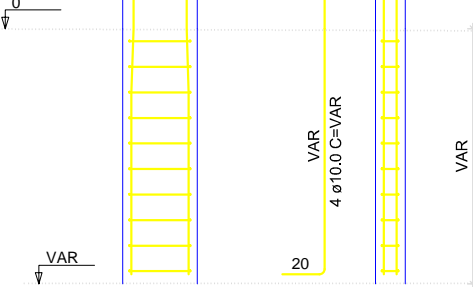
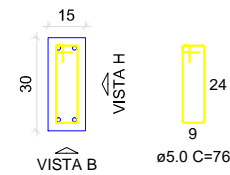
P1-P3-P6-P7-P8-P9

VISTA H
ESC 1:25

VISTA B
ESC 1:25

BALDRAMES - L1

SEÇÃO
ESC 1:20



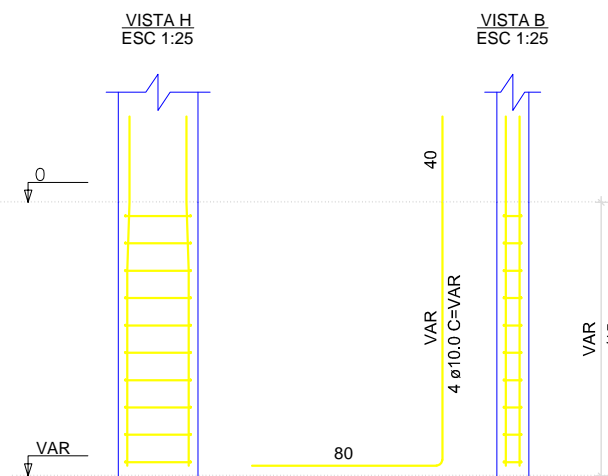
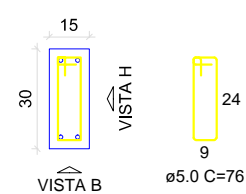
P2-P4-P5-P10

VISTA H
ESC 1:25

VISTA B
ESC 1:25

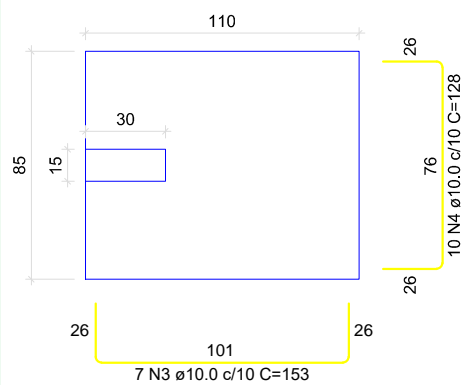
BALDRAMES - L1

SEÇÃO
ESC 1:20

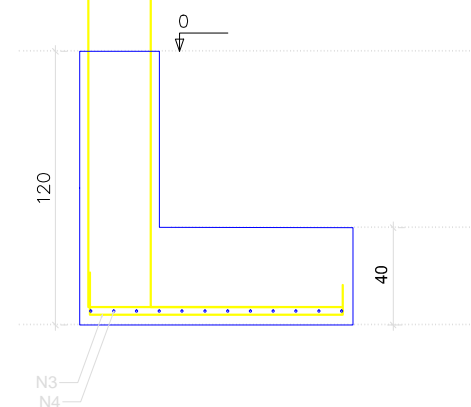


S2-S4-S5-S10

PLANTA
ESC 1:25



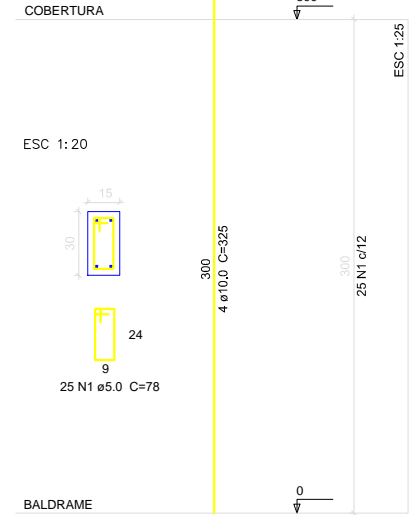
CORTE
ESC 1:25



Solo com capacidade de suporte > 1.50 kgf/cm²
Solo compactado sobre a sapata
peso específico > 1600.00 kgf/m³

Detalhamento Pilares

P1-P2-P4-P5-P6-P7-P8-P9-P10



MUNICÍPIO DE FAXINAL DOS GUEDES

Avenida Rio Grande do Sul, 458, Centro
CEP: 89694-000 - Faxinal dos Guedes/SC
Fone: 3436-4300 - www.faxinaldosguedes.sc.gov.br
CNPJ: 83.009.910-0001/62



PROJETO:

PROJETO ESTRUTURAL: AMPLIAÇÃO CASA DA CRIANÇA

LOCALIDADES: Rua Santa Catarina, Bairro São Cristóvão
MUNICÍPIO: Faxinal dos Guedes
DATA: 05/2024

ESTADO UF: SC
ESCALA: indicada

CONTEÚDO:

DETALHAMENTO SAPATAS
DETALHAMENTO PILARES

Folha:

02 / 02

Proprietário:

PREFEITURA DE FAXINAL DOS GUEDES - SC
CNPJ: 83.009.910.0001-62

Resp. Técnico:

SAMANTHA DE CAMPOS DA SILVA
ENGENHEIRA CIVIL
CREA-SC 171344-0